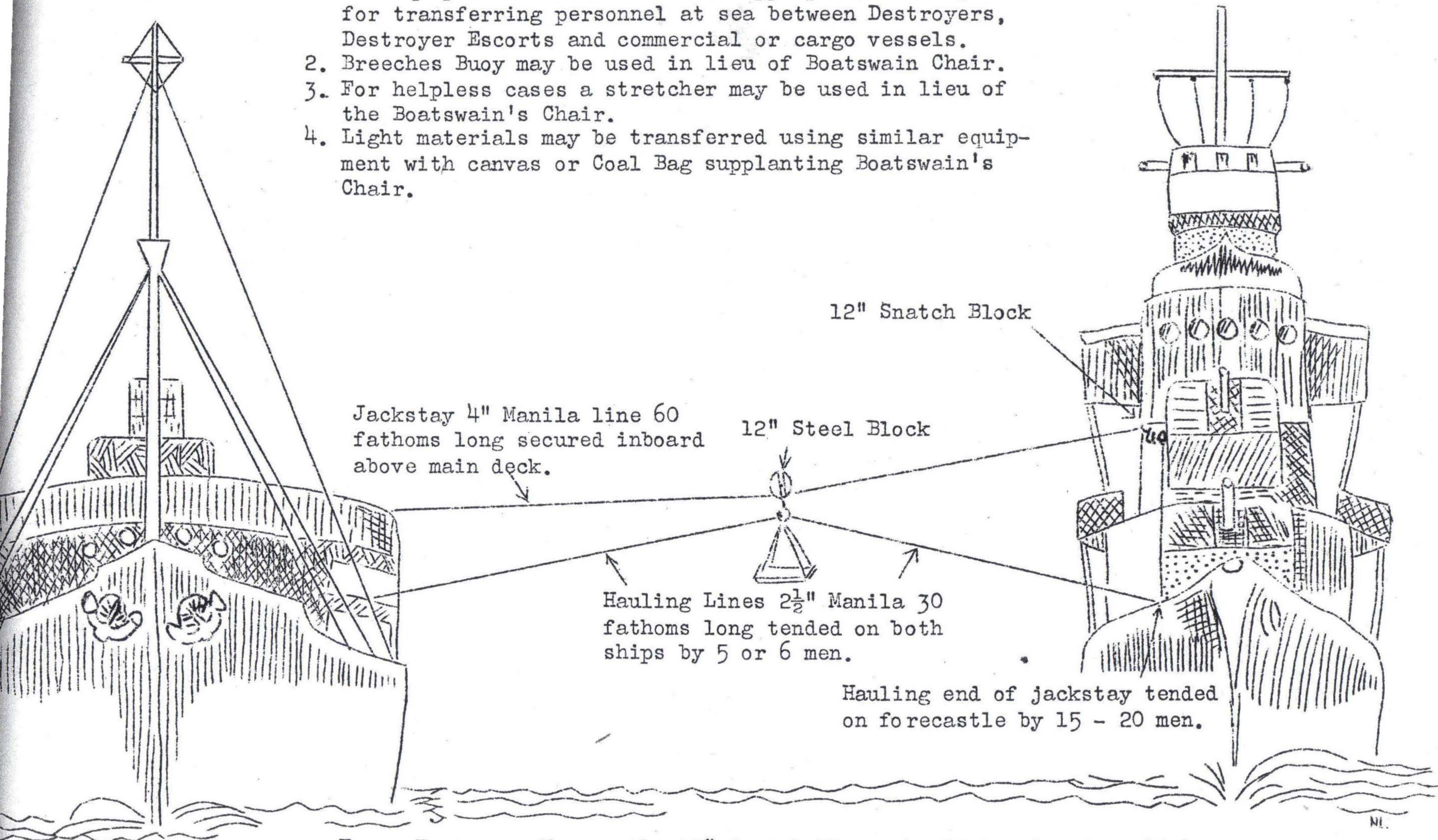
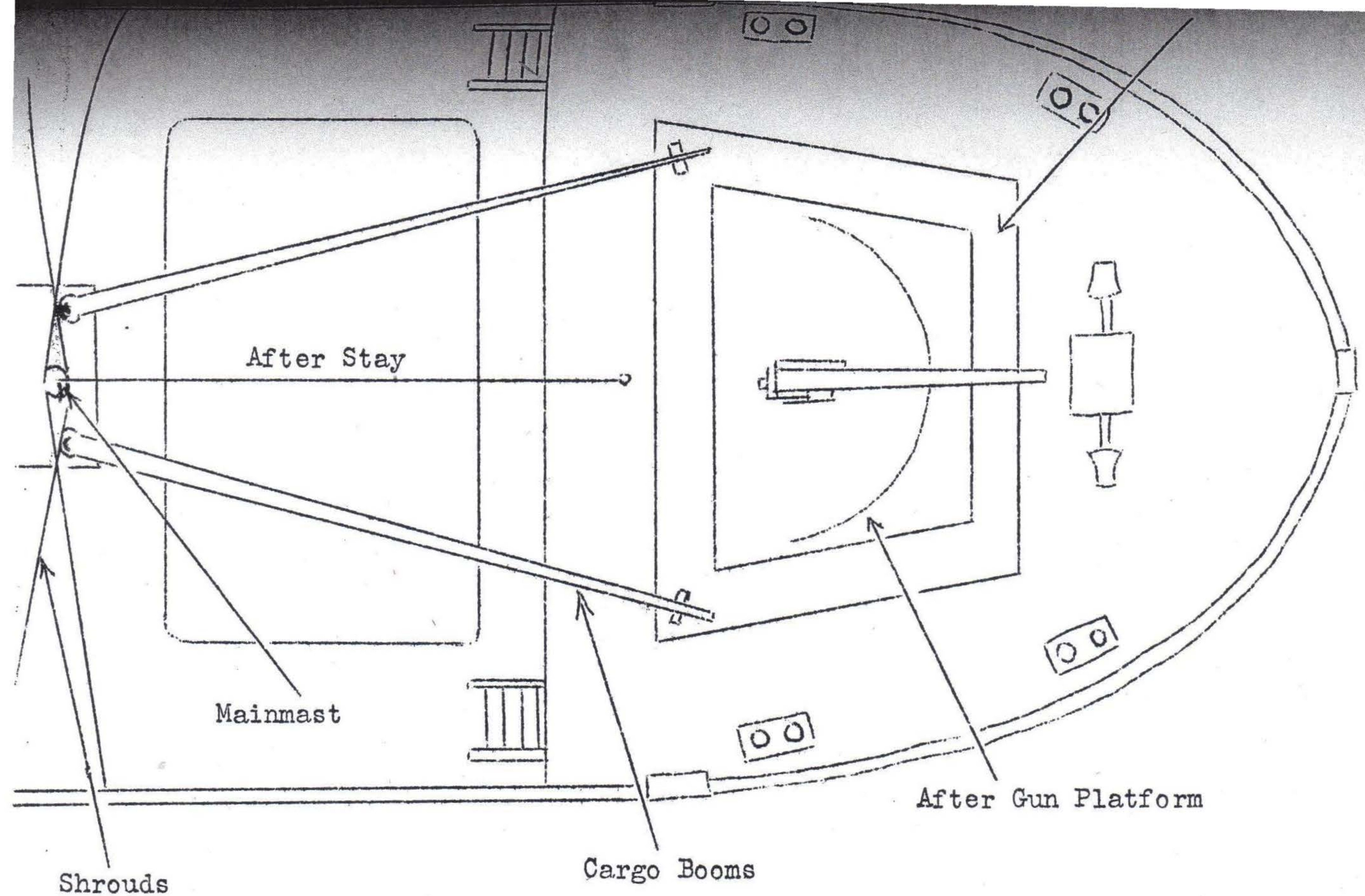


GENERAL ARRANGEMENT FOR TRANSFER OF PERSONNEL AT SEA

1. The equipment illustrated is an appropriate arrangement for transferring personnel at sea between Destroyers, Destroyer Escorts and commercial or cargo vessels.
2. Breeches Buoy may be used in lieu of Boatswain Chair.
3. For helpless cases a stretcher may be used in lieu of the Boatswain's Chair.
4. Light materials may be transferred using similar equipment with canvas or Coal Bag supplanting Boatswain's Chair.



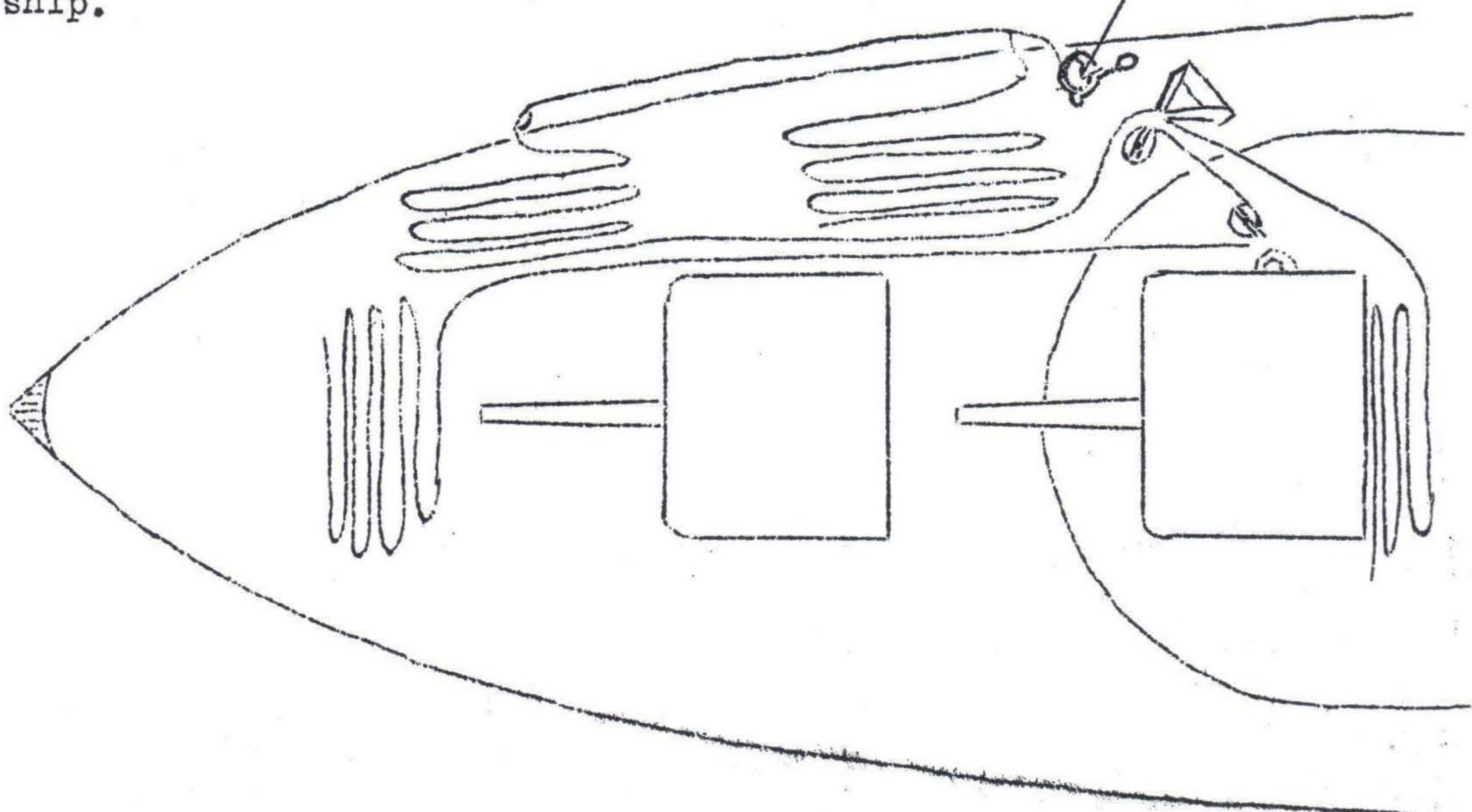
For a Destroyer Escort the 12" Snatch Block should be rigged as high as practicable in the vicinity of the Bridge Structure to give approximately the height illustrated for a 1650 ton Destroyer.

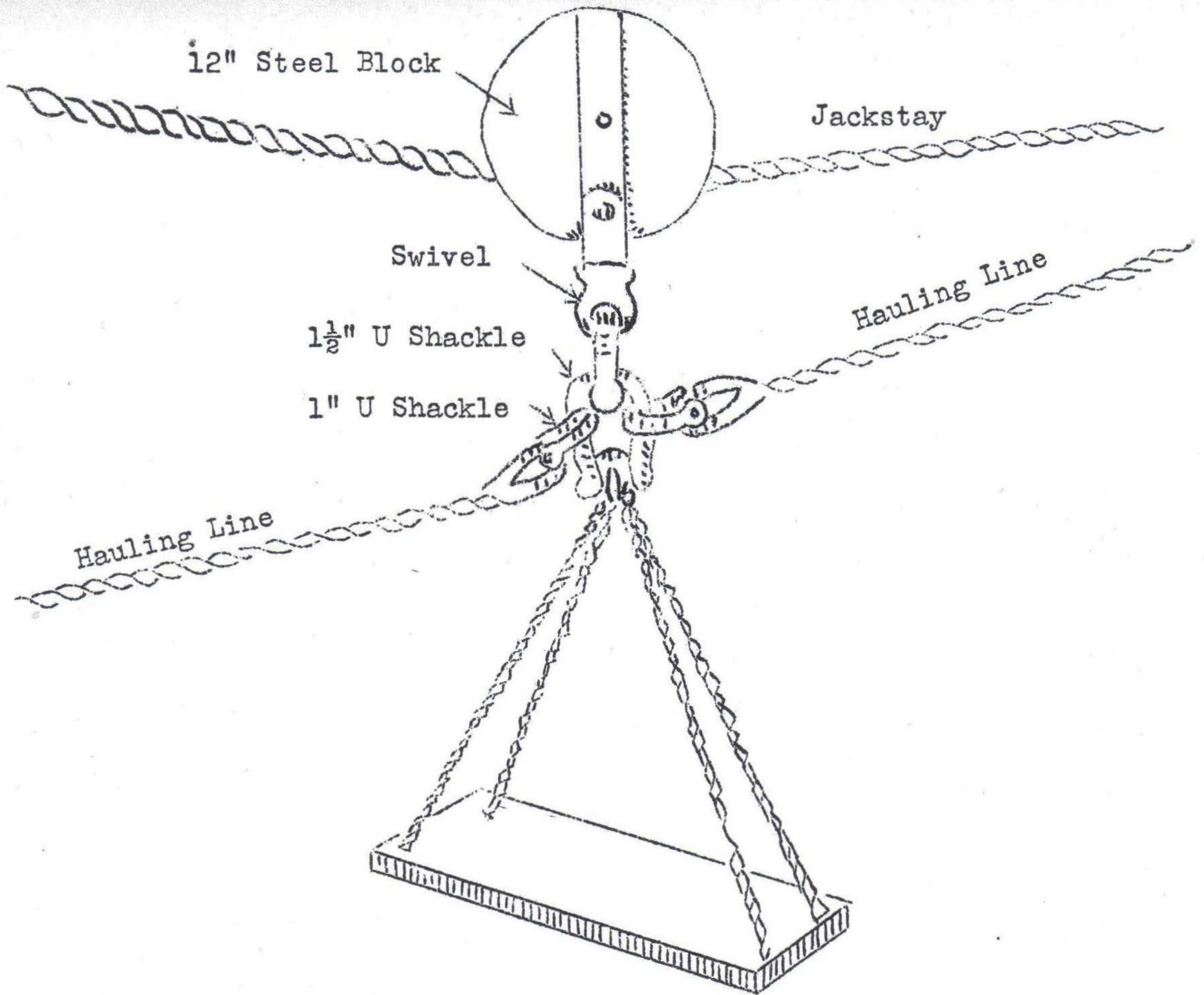


PLAN VIEW

Destroyer in position to pass lines,
 Distance 50 to 70 feet from receiving ship
 Destroyer on parallel course at same speed
 with bridge of destroyer opposite stern
 of receiving ship.

Heaving line bent to
 jackstay and hauling
 line





BOATSWAIN'S CHAIR -- DETAILS