



Taken by aircraft from the U.S. Naval Air Station Hampton Roads on May 15, 1944 (H.R. # 32959), the **U.S.S. LeJeune (AP-74)** is underway in the South Branch of the Elizabeth River, Commonwealth of Virginia. In the foreground is Norfolk's Wood Towing Corporation tugboat " Reliance " (p 2). In the background is the vicinity of 225 Water St. (Seaboard # 6) and 310 Water St. (Coca Cola) in Portsmouth. The Sanborn (Insurance) Map Company (Courtesy of the Norfolk Public Library – Title page & plat # 4.) provides additional insight. Today, this is home to the City of Portsmouth's municipal complex.

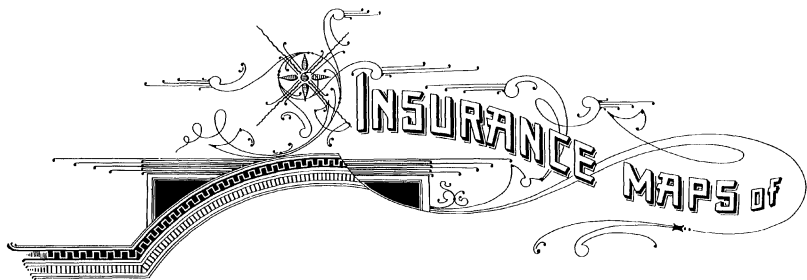
mck 9-17-2015



(Photograph (October 11, 1939) courtesy of the Norfolk Public Library, VA. – Digital Collections – Sargeant Memorial Collection (Photograph Collection 1850s – 2010s) FN568-003.jpg – cdm15987 – Thank-you !)

Built by the Leatham D. Smith Towing & Wrecking Company of Sturgeon Bay, WI. in 1919, the 177 GRT wooden tugboat " Reliance " was operated by the (Joseph Downing) Wood Towing Corporation (Norfolk, VA.) as " KJLH ". Her length was 95.5, breadth 24.7 and depth of 12.2.

mck September 7, 2015



PORTSMOUTH

VIRGINIA

VOLUME ONE



NEW YORK



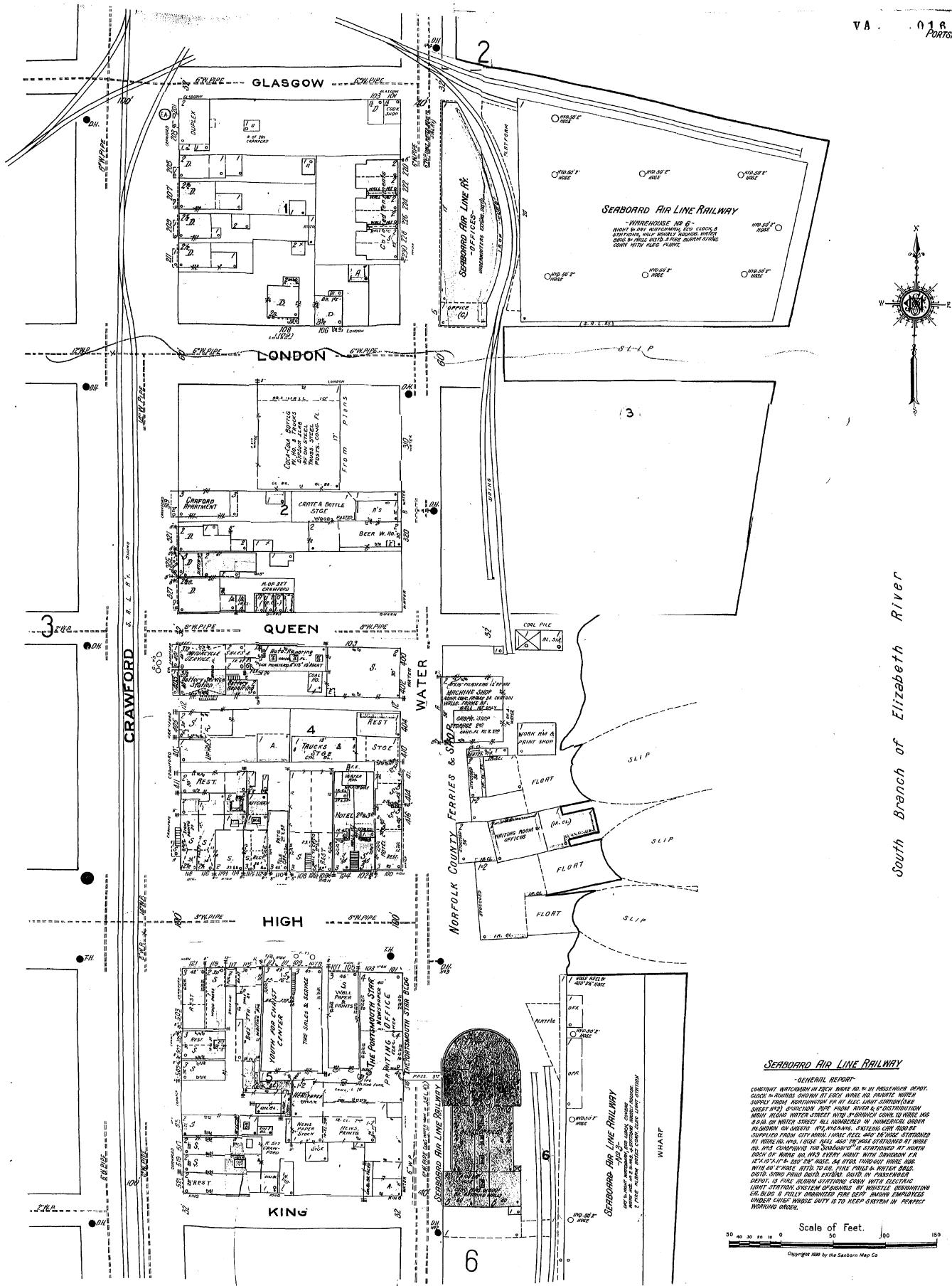
All rights reserved. No part of this map may be reproduced in any form without written permission from the Sanborn Map Company.

COPYRIGHT 1920 BY THE SANBORN MAP CO.

Close care exercised in the production of our publications and in our services, but absolute accuracy is not guaranteed.

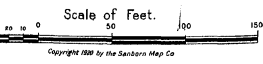
Copyright renewed 1949 by Sanborn Map Co.

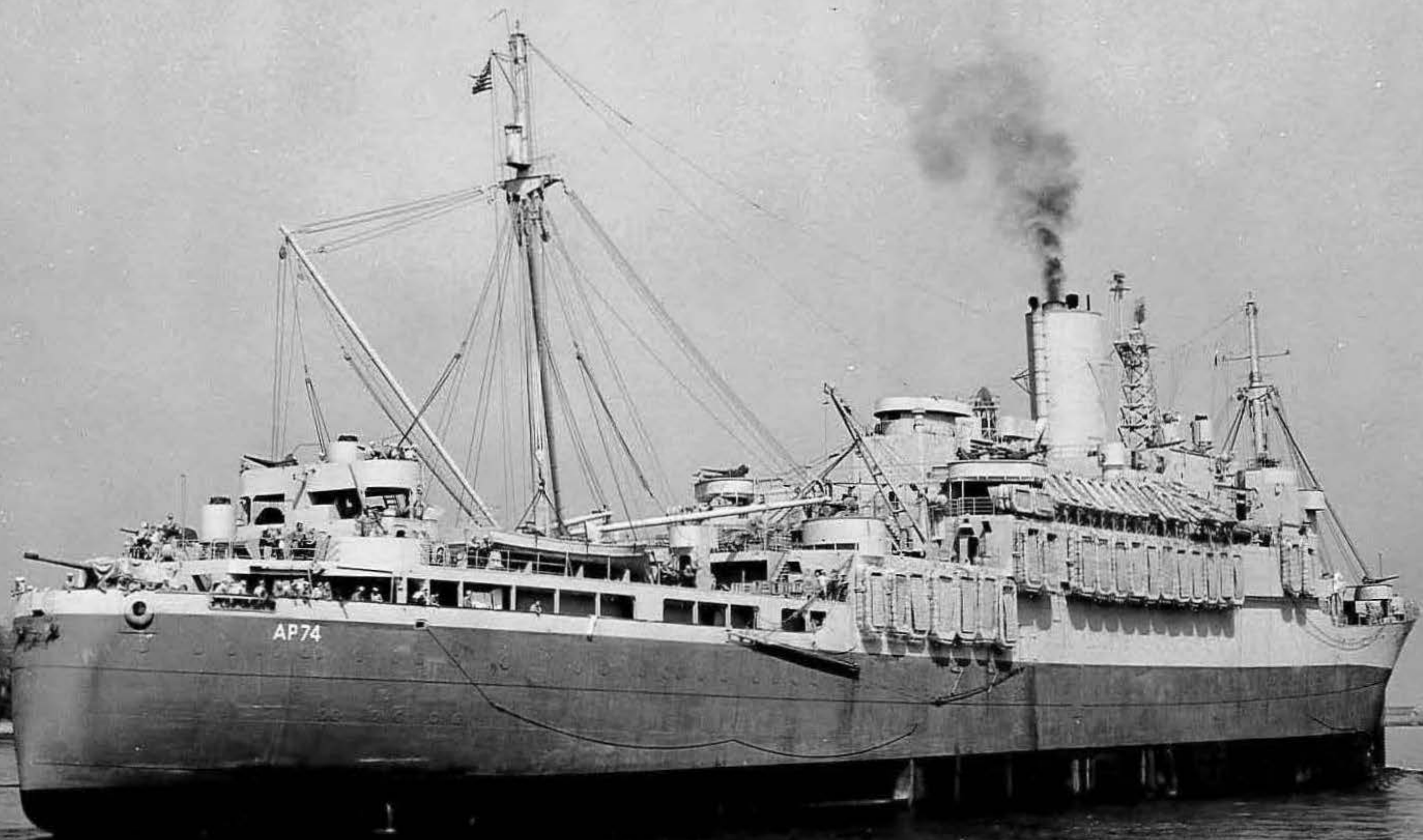




SEABOARD AIR LINE RAILWAY

GENERAL REPORT:
 CONSTANT WATCHMAN IN EACH NIGHT BELT BY PASSENGER DEPT.
 GUARD IN BURNED SHEDS AT EACH NIGHT AND PRIVATE WATCH
 SUPPLY FROM WASHINGTON FOR ALL FIRE LIGHT SUPPLIES
 SHEET METAL DISTRIBUTION FROM AVENUE & DISTRIBUTION
 FROM WOOD WATER STREET TO W. BURNING CORNER TO WARE
 6 1/2 IN WATER STREET ALL NUMBERED IN DOMESTIC ORDER
 BEHIND ON WAREHOUSE WELFARE SYSTEMS CAN TAKE
 SUPPLIED FROM CITY WATER HOUSE FEEL 400 EXHAUSTED
 IN WAREHOUSE 1000 FEEL AND 10000 STORED BY WARE
 NO. 102 STORED FOR WAREHOUSE IT IS STORED AT NIGHT
 EACH OF WAREHOUSE EVERY NIGHT WITH TANKS FOR
 1000 1/2 IN. SEE THE RECORD, THE WAREHOUSE HOUSE
 WITH 50 TONS RIGID TO 100 TONS PAUL & WITEN BELL
 DASH SAND PAILS 1000 STORED IN PASSENGER
 DEPT. IS FIRE ALARM STATIONS COME WITH ELECTRIC
 LIGHT STATION SYSTEM OPERATED BY WHISTLE OPERATING
 OR 1000 1/2 FULL OPERATED FIRE DEPT. HOUSE EMPLOYEES
 UNDER EVERY WAREHOUSE IS TO KEEP SYSTEM IN PERFECT
 WORKING ORDER.





AP 74
STBD. QUARTER
NORFOLK NAVY YARD
PHOTO SERIAL 7619(44) MAY 15, 1944

Reproduced from the Unclassified / Declassified Holdings of the National Archives

U.S.S. LeJeune

CONFIDENTIAL
RECEIVED OFFICIAL NAVY PHOTOGRAPH
If published
Credit line must read
OFFICIAL U. S. NAVY PHOTOGRAPH

BS # 66547